



Carina Cellars  
2007 Clairvoyant

A blend as timeless as Audrey Hepburn, this wine has a palate of strawberries, pomegranates and boysenberries touched with a finish of toffee and white pepper.

55% Syrah, 33% Grenache, 12% Mourvedre

[www.CarinaCellars.com](http://www.CarinaCellars.com)

\$ \_\_\_\_\_



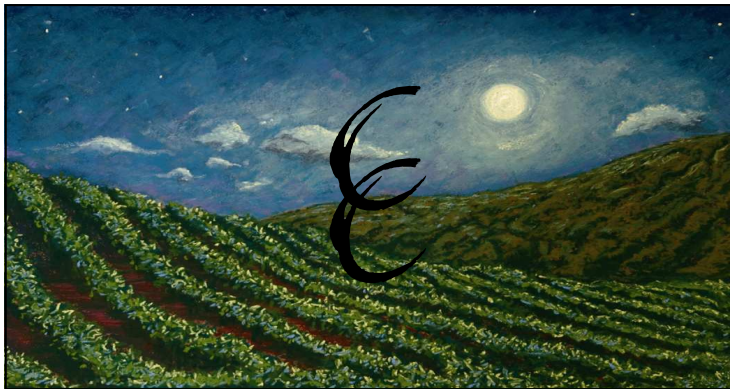
Carina Cellars  
2007 Clairvoyant

A blend as timeless as Audrey Hepburn, this wine has a palate of strawberries, pomegranates and boysenberries touched with a finish of toffee and white pepper.

55% Syrah, 33% Grenache, 12% Mourvedre

[www.CarinaCellars.com](http://www.CarinaCellars.com)

\$ \_\_\_\_\_



Carina Cellars  
2007 Clairvoyant

A blend as timeless as Audrey Hepburn, this wine has a palate of strawberries, pomegranates and boysenberries touched with a finish of toffee and white pepper.

55% Syrah, 33% Grenache, 12% Mourvedre

[www.CarinaCellars.com](http://www.CarinaCellars.com)

\$ \_\_\_\_\_



Carina Cellars  
2007 Clairvoyant

A blend as timeless as Audrey Hepburn, this wine has a palate of strawberries, pomegranates and boysenberries touched with a finish of toffee and white pepper.

55% Syrah, 33% Grenache, 12% Mourvedre

[www.CarinaCellars.com](http://www.CarinaCellars.com)

\$ \_\_\_\_\_